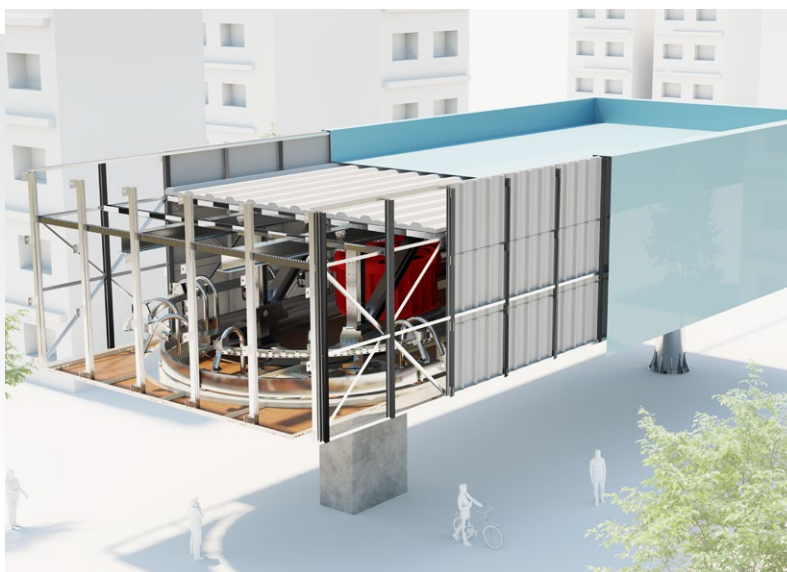


STATION

Urban LIFE Station Covering



The URBAN LIFE station covering is an innovative solution that offers a wide range of architectural possibilities to seamlessly integrate stations into the urban environment.



Perfectly integrated architecture

100% modular and adaptable

Complete **customisation** of façades and roof

High-performance acoustic treatment

100% French design

Accessible in complete safety for operating and maintenance personnel

By relying on known interfaces and predefined mounting points, the modular structure allows for a wide range of architectural forms.

Thanks to a double-skin system attached to the structure, each project is unique.

This makes it possible to create any design and exterior finish you want, for maximum customisation.



On-site construction and assembly



Raw materials Eco-design



Environmental Performance



Product Performance



Safety Performance

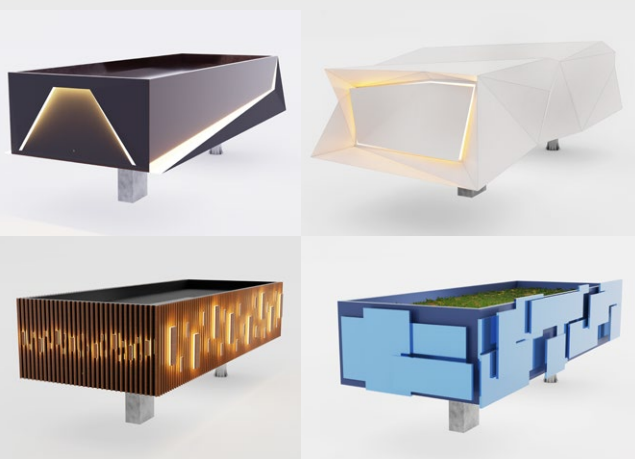


Compatible with new systems

STATION

Urban LIFE Station Covering

FEATURES & BENEFITS



► Meticulous and unique design

- Adaptation to the specific features of each project and seamless integration into the urban environment
- Architectural diversity thanks to modular, customisable elements
- Aesthetic cladding adapted to each environment (vegetation, cut-out aluminium or Corten steel sheets, moucharaby, etc.)

► Modular double-skin structure

- Brackets and roof fastening interfaces integrated into the station
- Double-skin structure to which soundproofing and external cladding can be fixed
- Resistance to weather conditions (rain, wind, heat, cold)
- Effective acoustic insulation, perfectly compatible with noise regulations

► Safety of operating personnel planned from the design stage

- Integrated roof railings
- Access from footbridges on nearby towers from inside the station

ENVIRONMENT

► Raw materials and eco-design:

- 100% French design
- Use of recycled materials
- Minimised quantity of material

► Manufacture: well-known standard profiles widely used in building structures

► Optimised transport thanks to standard profiles (compact)

► On-site construction and assembly: assembly techniques from the building industry, quick and easy to use

► Use

- Enhanced worker safety
- Vegetation can be planted to encourage urban greening, biodiversity, reduction of urban heat islands, air pollution control, thermal and acoustic insulation, etc.

► End of life

Recyclable and/or reusable materials

